



L5104 Series

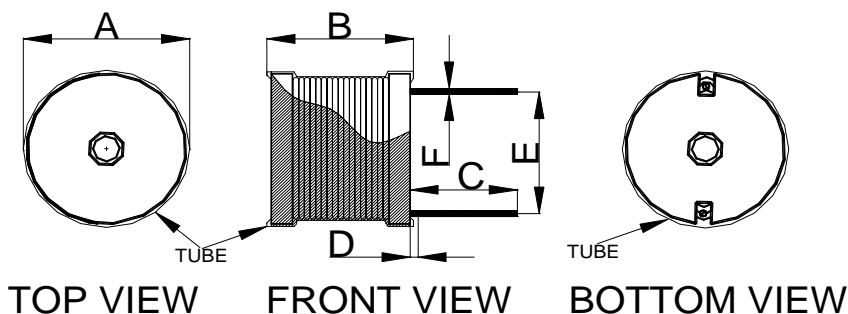


1. Features:

- Power Line Chokes offer cost effective solution with wide inductance value from 220uH to 15000uH, custom values are welcomed ;
- High current output chokes, up to 21.5 Amp for 220uH ;
- Ideal for Switching Regulators, Power Amplifiers, RFI Suppression, Filters, Power Supplies, Speaker Crossover Networks, SCR and Triac Controls ;
- Operating Temperature Range -55°C to + 130°C; RoHs compliance ;



2. Mechanical Dimension(Unit:mm):



Type	L5104
A	40.0 (Max.)
B	38.0 (Max.)
C	5.0 ± 1.0
D	0.5 (Max.)
E	see below table
F	see below table

3. Electrical Characteristic of L5104 Series:

Part Number	OCL (uH) ±10%	DCR (mΩ) (Typ.)	DCR (mΩ) (Max.)	Isat (A) @25°C	L@Isat (uH) Typ.	Irms (A) @25°C	L@Irms (uH) Typ.	E (mm) (REF)	F (mm) ± 0.1
L5104-221KU	220	29.2	34.0	21.5	211.9	13.5	219.4	27.9	1.7
L5104-331KU	330	37.8	44.0	18.0	317.4	13.5	328.2	28.2	1.7
L5104-471KU	470	58.4	67.5	14.5	450.0	11.4	466.6	27.2	1.5
L5104-681KU	680	78.7	91.0	11.0	658.3	9.0	673.9	27.2	1.4
L5104-102KU	1000	127.8	147.0	10.0	976.3	7.2	989.4	28.5	1.2
L5104-152KU	1500	181.0	208.5	7.4	1435.0	5.5	1490.3	28.5	1.1
L5104-222KU	2200	270.3	311.0	6.7	2112.9	5.5	2178.2	29.5	1.0
L5104-332KU	3300	392.7	452.0	5.2	3186.5	4.0	3270.7	28.9	0.9
L5104-472KU	4700	538.1	619.0	4.2	4509.0	4.0	4596.2	28.9	0.85
L5104-682KU	6800	754.8	868.5	3.8	6547.8	2.8	6747.0	26.9	0.8
L5104-103KU	10000	1197.5	1377.5	3.1	9599.0	2.0	9937.2	28.7	0.7
L5104-153KU	15000	1521.3	1750.0	2.6	14426.0	1.8	14902.0	28.7	0.7

Note:

- Open Circuit Inductance(OCL) and L@ I rms and L @Isat are measured at: 10KHz, 1.0V ;(Ta=25°C).
- Isat: DC current that causes inductance to drop approximately by 5% from OCL ;(Ta=25°C).
- I rms: DC current for an approximate temperature rise of 20°C without core loss ;



L5104 Series



Inductance vs. Current

