



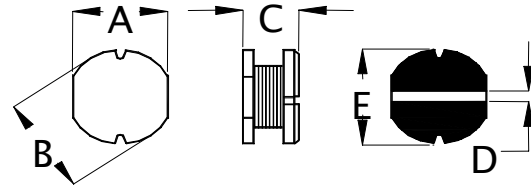
SD52 SMD Power Inductor



Features:

- Low Profile 2.3 mm Max. height.
- Inductance range 1 μ H ~ 3000 μ H.
- 1500 pcs per reel.

Mechanical Dimmensions (Unit: mm)					
Part Number	A	B	C	D	E
SD52	±0.3	±0.3	±0.3	Ref.	±0.5
SD52	4.5	5.0	2.0	2.0	5.0



Electrical Specifications				
Part Number	L@ 100kHz (μ H)	DCR Max. (Ω)	I _{sat} (Amp)	I _{rms} (Amp)
SD52-1R0U	1.0 +40% -20%	0.028	3.60	2.99
SD52-1R5MU	1.5±20%	0.047	3.06	2.54
SD52-1R8MU	1.8±20%	0.050	2.79	2.32
SD52-2R2MU	2.2±20%	0.052	2.34	1.94
SD52-2R7MU	2.7±20%	0.070	2.21	1.83
SD52-3R3MU	3.3±20%	0.080	2.07	1.72
SD52-3R9MU	3.9±20%	0.095	1.80	1.49
SD52-4R7MU	4.7±20%	0.100	1.71	1.42
SD52-6R8MU	6.8±20%	0.140	1.44	1.20
SD52-8R2MU	8.2±20%	0.160	1.26	1.05
SD52-100MU	10.0±20%	0.200	1.17	0.97
SD52-150MU	15.0±20%	0.300	0.85	0.71
SD52-220MU	22.0±20%	0.50	0.77	0.63
SD52-330MU	33.0±20%	0.80	0.60	0.49
SD52-390MU	39.0±20%	0.85	0.53	0.44
SD52-470MU	47.0±20%	0.90	0.51	0.42
SD52-680KU	68.0±10%	1.2	0.43	0.35
SD52-820KU	82.0±10%	1.5	0.38	0.32
SD52-101KU	100.0±10%	2.0	0.34	0.30
SD52-121KU	120.0±10%	2.1	0.33	0.29
SD52-151KU	150.0±10%	3.1	0.29	0.27
SD52-181KU	180.0±10%	4.2	0.26	0.26
SD52-221KU	220.0±10%	4.5	0.23	0.22
SD52-331KU	330.0±10%	6.6	0.20	0.20
SD52-471KU	470.0±10%	8.0	0.17	0.16
SD52-561KU	560.0±10%	13.2	0.14	0.14
SD52-681KU	680.0±10%	14.2	0.13	0.12
SD52-821KU	820.0±10%	15.7	0.12	0.11
SD52-102KU	1000.0±10%	25.3	0.10	0.10
SD52-202KU	2000.0±10%	35.0	0.08	0.08
SD52-222KU	2200.0±10%	47.3	0.08	0.07
SD52-302KU	3000.0±10%	69.2	0.06	0.06

Notes:

1. I_{sat}: 10% inductance roll off.
2. I_{rms}: 40 °C temperature rise.
3. Operating temperature: -25 ~130 °C.