



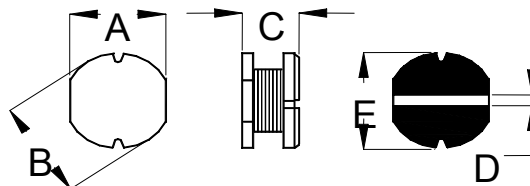
# SD105H SMD Power Inductor



## Features:

- Low Profile 5.9 mm Max. height.
- Inductance range 0.6  $\mu\text{H}$  ~ 820  $\mu\text{H}$ .
- 500 pcs per reel.
- H class wire is used to ensure solderability.
- Coplanarity = 0.10 mm.

Mechanical Dimensions (Unit: mm)					
Part Number	A	B	C	D	E
SD105H	$\pm 0.4$	$\pm 0.4$	$\pm 0.5$	Ref.	$\pm 0.5$
SD105H	9.0	10.0	5.4	3.5	10.2



Electrical Specifications				
Part Number	L@ 100Khz ( $\mu\text{H}$ )	DCR Max. ( $\Omega$ )	I <sub>sat</sub> (Amp)	I <sub>rms</sub> (Amp)
SD105H-R60U	0.6 +40% -20%	0.005	19.80	14.94
SD105H-1R0U	1.0 +40% -20%	0.008	15.30	12.70
SD105H-1R5MU	1.5 $\pm$ 20%	0.012	13.32	11.05
SD105H-2R2MU	2.2 $\pm$ 20%	0.014	11.25	9.34
SD105H-3R3MU	3.3 $\pm$ 20%	0.017	9.45	7.85
SD105H-4R7MU	4.7 $\pm$ 20%	0.020	8.55	7.10
SD105H-5R6MU	5.6 $\pm$ 20%	0.022	7.74	6.43
SD105H-6R8MU	6.8 $\pm$ 20%	0.027	7.11	5.90
SD105H-8R2MU	8.2 $\pm$ 20%	0.04	6.39	4.68
SD105H-100MU	10.0 $\pm$ 20%	0.06	3.15	3.31
SD105H-120MU	12.0 $\pm$ 20%	0.07	2.88	3.02
SD105H-150LU	15.0 $\pm$ 15%	0.08	2.61	2.74
SD105H-180LU	18.0 $\pm$ 15%	0.09	2.25	2.36
SD105H-220LU	22.0 $\pm$ 15%	0.10	2.16	2.27
SD105H-270LU	27.0 $\pm$ 15%	0.11	2.07	2.17
SD105H-330KU	33.0 $\pm$ 10%	0.12	1.89	1.98
SD105H-390KU	39.0 $\pm$ 10%	0.14	1.71	1.80
SD105H-470KU	47.0 $\pm$ 10%	0.17	1.53	1.61
SD105H-560KU	56.0 $\pm$ 10%	0.19	1.44	1.51
SD105H-680KU	68.0 $\pm$ 10%	0.22	1.26	1.32
SD105H-820KU	82.0 $\pm$ 10%	0.25	1.17	1.23
SD105H-101KU	100.0 $\pm$ 10%	0.35	1.08	1.13
SD105H-121KU	120.0 $\pm$ 10%	0.40	0.99	1.04
SD105H-151KU	150.0 $\pm$ 10%	0.47	0.81	0.85
SD105H-181KU	180.0 $\pm$ 10%	0.63	0.72	0.76
SD105H-221KU	220.0 $\pm$ 10%	0.73	0.64	0.67
SD105H-271KU	270.0 $\pm$ 10%	0.97	0.60	0.62
SD105H-331KU	330.0 $\pm$ 10%	1.15	0.55	0.58
SD105H-391KU	390.0 $\pm$ 10%	1.30	0.51	0.54
SD105H-471KU	470.0 $\pm$ 10%	1.48	0.47	0.49
SD105H-561KU	560.0 $\pm$ 10%	1.90	0.41	0.43
SD105H-681KU	680.0 $\pm$ 10%	2.25	0.38	0.40
SD105H-821KU	820.0 $\pm$ 10%	2.55	0.34	0.36

1. I<sub>sat</sub>: 10% Inductance roll off.
2. I<sub>rms</sub>: 40 °C Temperature rise.
3. Operating Temperature: -25 ~130 °C.