

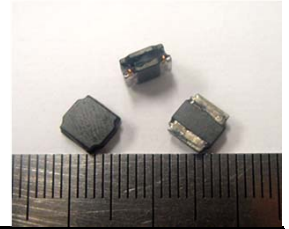


# SLNR3312 Series

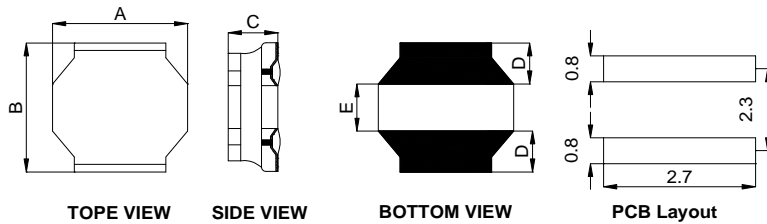


## 1. Features:

- Miniature SMD Shielded Power Inductor in a 3.3\*3.3mm foot print;
- Low profile : 1.2mm max.height.
- Inductance Range of 0.82uH to 100.0uH ;
- Ideal for DC to DC power converter application ;
- Operating Temperature Range -55°C to + 130°C , RoHs compliance ;
- T & R Qty: 2000 pcs , 7" Reel ;



## 2. Mechanical Dimension(Unit:mm):



Type	SLNR3312
A	3.0 ± 0.3
B	3.0 ± 0.3
C	1.2 (Max.)
D	0.75 ± 0.3
E	1.5 ± 0.3

## 3. Electrical Characteristic of SLNR3312 Series:

Part Number	OCL (uH) ± 20% or 30%	DCR (mΩ) ±30%	Isat (A) @25°C	Irms (A) @25°C	SRF (MHz) Min
SLNR3312-R82NHF	0.82 , 30%	30.0	2.05	2.47	180
SLNR3312-1R0NHF	1.0 , 30%	40.0	1.87	2.20	120
SLNR3312-1R2NHF	1.2 , 30%	45.0	2.22	2.01	120
SLNR3312-1R5NHF	1.5 , 30%	45.0	1.62	2.01	110
SLNR3312-1R8NHF	1.8 , 30%	55.0	1.51	1.84	90
SLNR3312-2R2NHF	2.2 , 30%	75.0	1.20	1.55	84
SLNR3312-2R4NHF	2.4 , 30%	68.0	1.15	1.50	100
SLNR3312-2R7NHF	2.7 , 30%	85.0	1.14	1.48	65
SLNR3312-3R3MHF	3.3 , 20%	100.0	1.05	1.36	64
SLNR3312-4R7MHF	4.7 , 20%	120.0	0.90	1.24	61
SLNR3312-6R8MHF	6.8 , 20%	190.0	0.75	0.98	61
SLNR3312-100MHF	10.0 , 20%	265.0	0.60	0.83	42
SLNR3312-120MHF	12.0 , 20%	345.0	0.48	0.73	32
SLNR3312-150MHF	15.0 , 20%	360.0	0.45	0.71	27
SLNR3312-180MHF	18.0 , 20%	545.0	0.43	0.58	25
SLNR3312-220MHF	22.0 , 20%	630.0	0.42	0.53	23
SLNR3312-270MHF	27.0 , 20%	770.0	0.40	0.49	21
SLNR3312-330MHF	33.0 , 20%	875.0	0.36	0.46	19
SLNR3312-360MHF	36.0 , 20%	950.0	0.34	0.44	18
SLNR3312-390MHF	39.0 , 20%	1330.0	0.30	0.37	18
SLNR3312-470MHF	47.0 , 20%	1450.0	0.27	0.35	17
SLNR3312-560MHF	56.0 , 20%	1380.0	0.26	0.36	14
SLNR3312-620MHF	62.0 , 20%	1530.0	0.25	0.35	12
SLNR3312-680MHF	68.0 , 20%	1670.0	0.24	0.33	12
SLNR3312-820MHF	82.0 , 20%	2540.0	0.22	0.27	12
SLNR3312-101MHF	100.0 , 20%	2860.0	0.21	0.25	12

### Note:

- 1.Open Circuit Inductance (OCL) and L@Isat test condition: 100KHz, 1.0V ;(Ta=25°C);
- 2.Isat: DC current that causes inductance to drop by approximately 30% from OCL ; (Ta=25°C);
- 3.Irms: DC current that causes an approximate temperature rise (ΔT) of 40°C ; (Ta=25°C);