

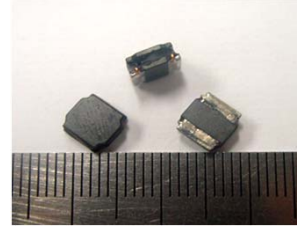


SLNR3310 Series

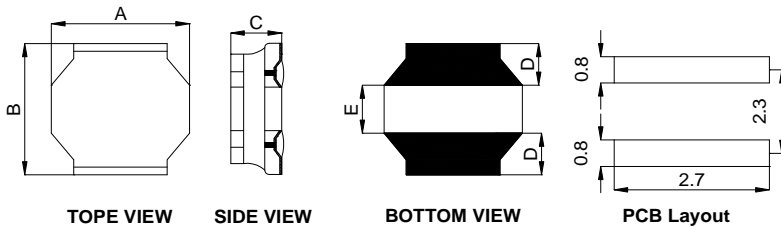


1. Features:

- Miniature SMD Shielded Power Inductor in a 3.3*3.3mm foot print;
- Low profile : 1.0mm max.height.
- Inductance Range of 1.0uH to 56.0uH ;
- Ideal for DC to DC power converter application ;
- Operating Temperature Range -55°C to + 130°C , RoHs compliance ;
- T & R Qty: 2000 pcs , 7" Reel ;



2. Mechanical Dimension(Unit:mm):



Type	SLNR3310
A	3.0 ± 0.3
B	3.0 ± 0.3
C	1.0 (Max.)
D	0.75 ± 0.3
E	1.5 ± 0.3

3. Electrical Characteristic of SLNR3310 Series:

Part Number	OCL (uH) ± 20% or 30%	DCR (mΩ) ±30%	Isat (A) @25°C	Irms (A) @25°C	SRF (MHz) Min
SLNR3310-1R0NHF	1.0 , 30%	65.0	1.40	1.45	180
SLNR3310-1R5NHF	1.5 , 30%	80.0	1.27	1.30	120
SLNR3310-2R2NHF	2.2 , 30%	95.0	1.15	1.10	100
SLNR3310-2R7NHF	2.7 , 30%	130.0	1.00	1.02	90
SLNR3310-3R3NHF	3.3 , 30%	140.0	0.97	0.96	74
SLNR3310-3R6NHF	3.6 , 30%	165.0	0.95	0.90	67
SLNR3310-4R7NHF	4.7 , 30%	190.0	0.75	0.78	59
SLNR3310-6R8NHF	6.8 , 30%	300.0	0.61	0.66	46
SLNR3310-100MHF	10.0 , 20%	400.0	0.55	0.58	39
SLNR3310-120MHF	12.0 , 20%	505.0	0.43	0.52	36
SLNR3310-150MHF	15.0 , 20%	610.0	0.42	0.47	30
SLNR3310-220MHF	22.0 , 20%	930.0	0.35	0.38	28
SLNR3310-270MHF	27.0 , 20%	1080.0	0.30	0.35	25
SLNR3310-330MHF	33.0 , 20%	1550.0	0.29	0.30	20
SLNR3310-390MHF	39.0 , 20%	1750.0	0.28	0.28	18
SLNR3310-470MHF	47.0 , 20%	1950.0	0.22	0.26	18
SLNR3310-510MHF	51.0 , 20%	2200.0	0.21	0.25	18
SLNR3310-560MHF	56.0 , 20%	2320.0	0.21	0.24	16

Note:

- 1.Open Circuit Inductance (OCL) and L@Isat test condition: 100KHz, 1.0V ;(Ta=25°C);
- 2.Isat: DC current that causes inductance to drop by approximately 30% from OCL ; (Ta=25°C);
- 3.Irms: DC current that causes an approximate temperature rise (ΔT) of 40°C ; (Ta=25°C);