

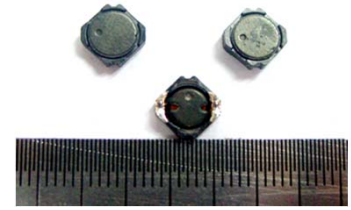


SDRR06830 Series

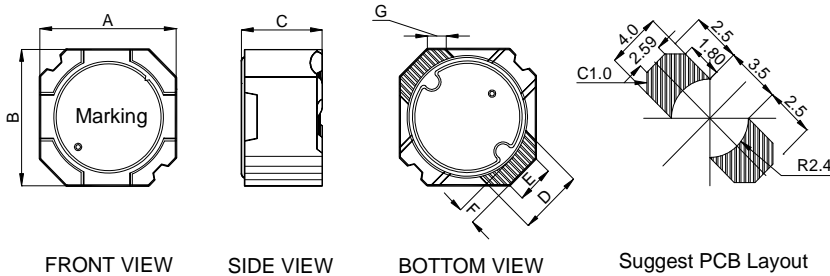


1. Features:

- Ferrite based SMD Inductor with lower core loss.
- Inductance Range:1.0uH to 120uH. Custom values are welcomed.
- High current output chokes, upto 8.5 Amp with max. 35% roll off.
- Low Profile 3.0 mm Max. height .
- Foot Print 6.8 x 6.8 mm Max.
- Ideal for LCD driver,DSC/DVC,Notebook PC and High Density Board Design.
- Operating Temperature Range -55°C to + 130°C, RoHs&HF compliance.



2. Mechanical Dimension(Unit:mm):



Type	SDRR06830			
A	6.5	±	0.3	mm
B	6.5	±	0.3	mm
C	3.0		(MAX)	mm
D	3.0		(Nom.)	mm
E	1.7		(Nom.)	mm
F	1.0		(Nom.)	mm
G	0.9		(Nom.)	mm

3. Electrical Characteristic of SDRR06830 Series:

Part Number	Inductance (uH) ± 25%	DCR (mΩ) Typ.	DCR (mΩ) Max	Isat ¹ (A) @25°C	L@Isat ¹ (uH) Typ.	Isat ² (A) @105°C	L@Isat ² (uH) Typ.	Irms (A) @25°C	L@Irms (uH) Typ.
SDRR06830-1R0PHF	1.0	7.21	9.0	8.5	0.79	6.80	0.77	6.3	1.40
SDRR06830-1R6PHF	1.6	9.96	12.5	7.0	1.23	6.10	1.27	5.5	1.56
SDRR06830-2R2PHF	2.2	13.75	17.2	6.0	1.71	4.60	1.85	4.8	2.10
SDRR06830-3R0PHF	3.0	17.72	22.2	5.4	2.25	4.30	2.33	4.0	2.90
SDRR06830-3R9PHF	3.9	22.42	28.0	4.6	3.10	3.70	3.15	3.6	3.75
SDRR06830-4R7PHF	4.7	25.85	32.4	4.4	3.50	3.30	3.60	3.3	4.60
SDRR06830-5R8PHF	5.8	32.07	40.0	4.0	4.20	2.90	4.50	3.00	5.55
SDRR06830-7R0PHF	7.0	34.90	43.6	3.6	5.62	2.70	5.75	2.80	6.70
SDRR06830-8R2PHF	8.2	41.64	52.0	3.0	6.38	2.60	6.97	2.60	7.60
SDRR06830-100PHF	10.0	52.68	65.9	2.9	8.00	2.30	7.70	2.40	9.50
SDRR06830-120PHF	12.0	57.43	71.8	2.7	9.77	1.90	9.40	2.20	11.40
SDRR06830-150PHF	15.0	73.97	92.5	2.4	11.20	1.70	11.80	2.00	14.30
SDRR06830-180PHF	18.0	99.01	123.8	2.1	15.90	1.53	14.30	1.75	17.30
SDRR06830-220PHF	22.0	111.75	139.7	2.0	18.20	1.40	17.50	1.60	20.65
SDRR06830-270PHF	27.0	132.13	165.2	1.8	21.80	1.20	22.00	1.50	25.50
SDRR06830-330PHF	33.0	160.21	200.3	1.60	26.60	1.10	21.90	1.40	30.30
SDRR06830-390PHF	39.0	193.20	241.5	1.40	34.10	1.05	29.50	1.30	36.20
SDRR06830-470PHF	47.0	236.40	295.5	1.30	41.10	0.95	35.60	1.20	43.50
SDRR06830-560PHF	56.0	253.50	316.9	1.20	50.00	0.85	44.45	1.10	52.50
SDRR06830-680PHF	68.0	330.50	413.2	1.10	57.30	0.80	57.50	1.00	61.00
SDRR06830-820PHF	82.0	391.30	489.2	1.00	74.10	0.75	62.50	0.90	77.40
SDRR06830-101PHF	100.0	507.50	634.4	0.90	85.45	0.65	76.00	0.80	91.80
SDRR06830-121PHF	120.0	628.20	785.3	0.80	108.65	0.60	98.40	0.70	113.80

Note:

- 1.Open Circuit Inductance (OCL) test condition:100KHz,1.0 Vrms ,0Adc;(Ta=25°C).
- 2.Isat¹&Isat²: DC current that will cause inductance to drops 35%(Typical);(Ta=25°C).
3. Irms: DC current for an approximate temperature rise of 40°C without core loss ;(Ta=25°C).



SDRR06830 Series

Inductance vs. Current

