

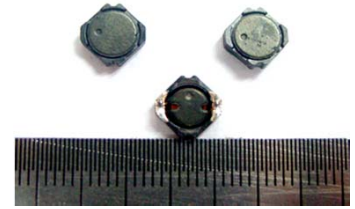


SDRR06825 Series

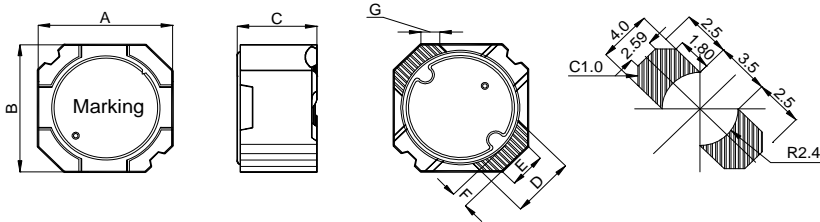


1. Features:

- Ferrite based SMD Inductor with lower core loss.
- Inductance Range:0.65uH to 100uH. Custom values are welcomed.
- High current output chokes, upto 7.0 Amp with max. 35% roll off.
- Low Profile 2.5mm Max. height .
- Foot Print 6.8 x 6.8 mm Max.
- Ideal for LCD driver,DSC/DVC,Notebook PC and High Density Board Design.
- Operating Temperature Range -55°C to + 130°C, RoHs&HF compliance.



2. Mechanical Dimension(Unit:mm):



Type	SDRR06825			
A	6.5	±	0.3	mm
B	6.5	±	0.3	mm
C	2.5		(MAX)	mm
D	3.0		(Nom.)	mm
E	1.7		(Nom.)	mm
F	1.0		(Nom.)	mm
G	0.9		(Nom.)	mm

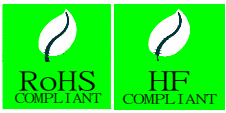
3. Electrical Characteristic of SDRR06825 Series:

Part Number	Inductance (uH) ± 25%	DCR (mΩ) Typ.	DCR (mΩ) Max	Isat ¹ (A) @25°C	L@Isat ¹ (uH) Typ.	Isat ² (A) @105°C	L@Isat ² (uH) Typ.	Irms (A) @25°C	L@Irms (uH) Typ.
SDRR06825-R65PHF	0.65	6.51	8.2	7.0	0.62	5.5	0.62	6.0	0.63
SDRR06825-1R1PHF	1.1	9.76	12.2	5.5	1.05	4.6	1.08	5.0	1.07
SDRR06825-1R6PHF	1.6	11.87	14.9	5.0	1.52	3.6	1.55	4.8	1.54
SDRR06825-2R2PHF	2.2	15.95	20.0	3.9	2.04	3.1	1.99	3.8	2.05
SDRR06825-3R0PHF	3.0	19.12	23.9	3.3	2.84	2.7	2.88	3.6	2.72
SDRR06825-3R6PHF	3.6	23.65	29.6	3.0	3.45	2.4	3.48	3.3	3.32
SDRR06825-4R7PHF	4.7	27.96	35.0	2.7	4.44	2.1	4.53	3.0	4.10
SDRR06825-5R8PHF	5.8	35.12	43.9	2.4	5.45	2.0	5.39	2.9	3.37
SDRR06825-6R8PHF	6.8	39.92	49.9	2.2	6.42	1.9	6.55	2.8	3.00
SDRR06825-8R0PHF	8.0	45.25	56.6	2.0	7.63	1.7	7.60	2.6	4.27
SDRR06825-100PHF	10	56.24	70.3	1.8	9.50	1.6	9.50	2.2	8.20
SDRR06825-120PHF	12	67.85	84.9	1.7	11.30	1.4	11.40	2.0	9.95
SDRR06825-150PHF	15	83.14	104.0	1.5	14.00	1.2	14.25	1.8	11.80
SDRR06825-180PHF	18	95.75	120.0	1.4	16.80	1.10	17.00	1.7	9.00
SDRR06825-220PHF	22	117.82	147.5	1.20	21.00	1.00	21.00	1.5	14.60
SDRR06825-270PHF	27	143.47	179.5	1.10	26.00	0.90	26.00	1.40	18.00
SDRR06825-330PHF	33	160.10	200.2	1.00	31.70	0.80	32.00	1.30	23.00
SDRR06825-390PHF	39	210.90	263.7	0.90	37.30	0.70	37.00	1.20	10.30
SDRR06825-470PHF	47	252.60	315.8	0.85	44.30	0.65	45.20	1.10	23.40
SDRR06825-560PHF	56	285.70	357.2	0.75	53.40	0.60	54.50	1.00	17.00
SDRR06825-680PHF	68	354.70	443.5	0.70	64.50	0.52	61.80	0.90	24.00
SDRR06825-820PHF	82	445.80	557.3	0.65	77.20	0.50	79.50	0.80	48.60
SDRR06825-101PHF	100	549.10	686.5	0.60	94.40	0.45	93.50	0.70	82.30

Note:1.Open Circuit Inductance (OCL) test condition:100KHz,1.0 Vrms ,0Adc;(Ta=25°C).

2.Isat: DC current that will cause inductance to drops 35%(Typical);(Ta=25°C).

3. Irms: DC current for an approximate temperature rise of 40°C without core loss ;(Ta=25°C).



SDRR06825 Series

Inductance vs. Current

